

From invention to innovation

SCIENTIFIC EXPERTISE

- Cardiovascular diseases
- Inflammation
- Hepatology
- Oncology

APPLICATIONS

- Protocol development (MRI sequence, radiolabelling)
- Imaging agent proof of concept and characterization
- Companion diagnostics
- Treatment follow-up

TRACK RECORD

- Guerbet
- GE healthcare
- OTR3
- Acticor

PUBLICATIONS

Liga R et al., *Eur Heart J Cardiovasc Imaging*. 2016 Mar 18. pii: jew038. [Epub ahead of print] Review.
 Tournoux F, et al., *Eur Heart J Cardiovasc Imaging*. 2015 Nov 27. pii: jev286. [Epub ahead of print]
 Hyafil F, et al. *Mol Imaging*. 2015;14:433-42.

CONTACT

Mail : bd-services@idfinnov.com

Phone : +33(0)1.80.05.65.01

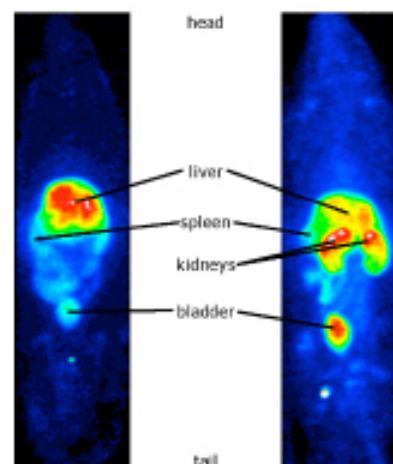
MULTIMODAL PRECLINICAL IMAGING PLATFORM

In vivo imaging for widely use in the development of a new drug, from phenotyping to side effect characterization through pharmacokinetics and bio distribution evaluations.

In vivo imaging ■ RMI ■ SPECT-CT ■ SPECT ■ PET ■
 Animal model ■ Biomarkers ■ Human pathology ■
 Preclinical studies ■ Proof of concept ■

SERVICE DESCRIPTION

The present platform provides state-of-the-art equipment for multimodal imaging of small animals. The platform includes ultrasound, 7T MRI, PET, SPECT-CT and SPECT-MRI imaging capabilities. Its localization within a hospital where every preclinical device has its clinical counterpart enables a bench-to-bedside strategy. The multidisciplinary environment created by the combined expertise of physicians, engineers and biologists favors a translational approach, and the involvement of clinical practitioners ensures a better understanding of unmet needs and clinical requirements in major therapeutic areas.



© MDPI

OFFER

- Modalities: ultrasound, 7T MRI, SPECT-CT, PET
- Animal models: mouse, rat, rabbit
- Fee-for-service imaging and data analysis
- Custom collaborations